

# ES 4000

## LABELLING SYSTEM



### Why label with ES 4000?

With the ES 4000, up-to-date data can be printed on a label during production and the label can be attached in a tamperproof manner directly on the product during clipping. The system was especially developed for automatic double-clippers of the PDC and PDC-A series, and all products within a calibre range of 20 to 115 mm can be provided with a label. Suitable for plastic, fibrous, collagen and natural casings.

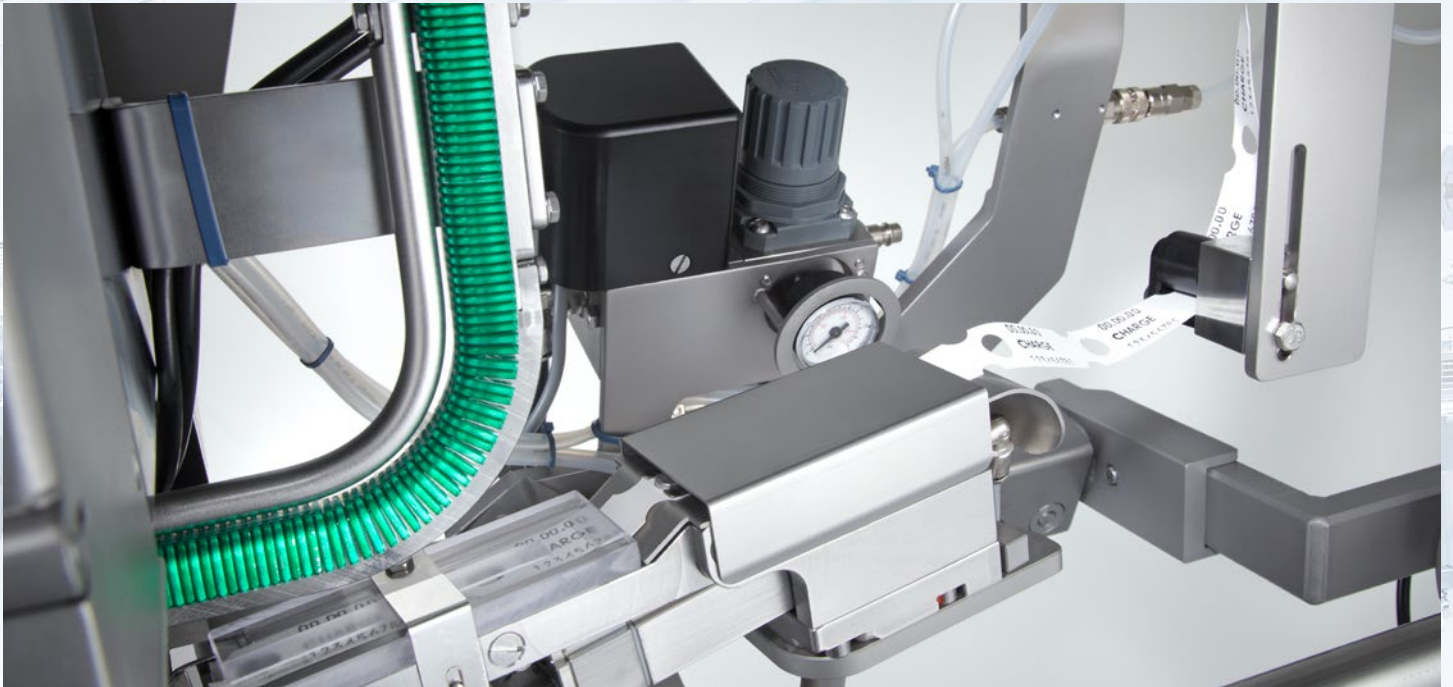
### Product labelling

- Tamper-proof product marking
- Batch tracing
- Individual up-to-date data
- Retrofitting possible any time
- Can be combined with the PDC and PDC-A
- Clear, cost-effective product labelling
- Compatible with all PDC and PDC-A machines
- Simplifies the use of unprinted casing

Excellence in Clipping



# DETAILS



Tamper-proof product marking during production

## Advantages

- Product labelling during production
- Hot stamping printer for clean, exact printing
- Prints all product-specific, up-to-date data for exact batch tracing
- Printing range 24 x 12 mm
- Printing plate with up to eight characters or letters in a maximum of two lines
- Easy exchange of the printing plate even during production
- The inking rollers are available in different colours

## Advantages labels

- 5.000 labels per roll
- Abrasion-resistant boil-proof, no ink smearing
- Blank or coloured

- Pre-printed with customer logo or as decorative label with individual print
- Labels: length 60.3 mm, width 19.8 mm; thereof printing range 38 x 18 mm

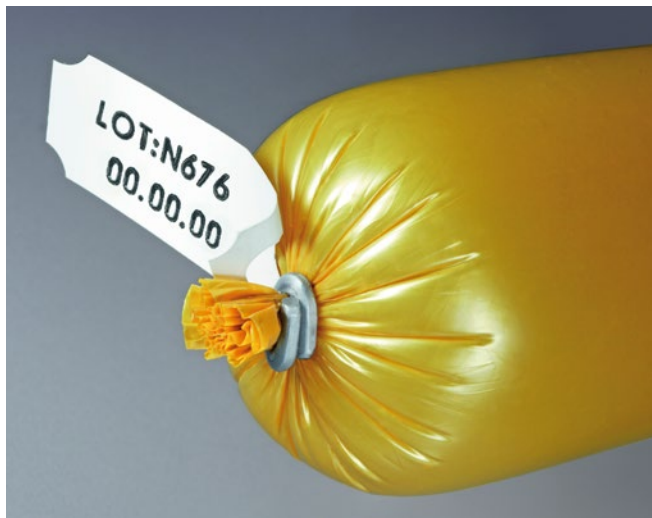


## Quality and hygiene

- Label dispenser, attachment kits and hot stamping printer are made completely from stainless steel or industrial plastic
- The printer can be removed for high-pressure cleaning of the machine

## Equipment options

- Set of text types
- Set of numeric characters
- Set of dates
- Additional printing plate



Simple and safe: Marking by printed labels

## Function and operation

The ES 4000 labelling system is mounted directly to the PDC or PDC-A. The labels are transported to the hot stamping printer, printed and routed to the separators via a guide rail. The label is clipped during clipping..

Excellence in Clipping

