

Product labelling

- Tamper-proof product marking
- Batch tracing
- Individual up-to-date data
- Retrofitting possible any time
- Can be combined with the PDC and PDC-A

Why label with ES 4000?

With the ES 4000, up-to-date data can be printed on a label during production and the label can be attached in a tamperproof manner directly on the product during clipping. The system was especially developed for automatic double-clippers of the PDC and PDC-A series, and all products within a calibre range of 20 to 115 mm can be provided with a label. Suitable for plastic, fibrous, collagen and natural casings.



Advantages

- Product labelling during production
- Hot stamping printer for clean, exact printing
- Prints all product-specific, up-to-date data for exact batch tracing
- Printing range 24 x 12 mm
- Printing plate with up to eight characters or letters in a maximum of two lines
- Easy exchange of the printing plate even during production
- The inking rollers are available in different colours



Advantages labels

- 5.000 labels per roll
- Abrasion-resistant boil-proof, no ink smearing
- Blank or coloured
- Pre-printed with customer logo or as decorative label with individual print
- Labels: length 60.3 mm, width 19.8 mm; thereof printing range 38 x 18 mm



Quality and hygiene

- Label dispenser, attachment kits



and hot stamping printer are made completely from stainless steel or industrial plastic

- The printer can be removed for high-pressure cleaning of the machine

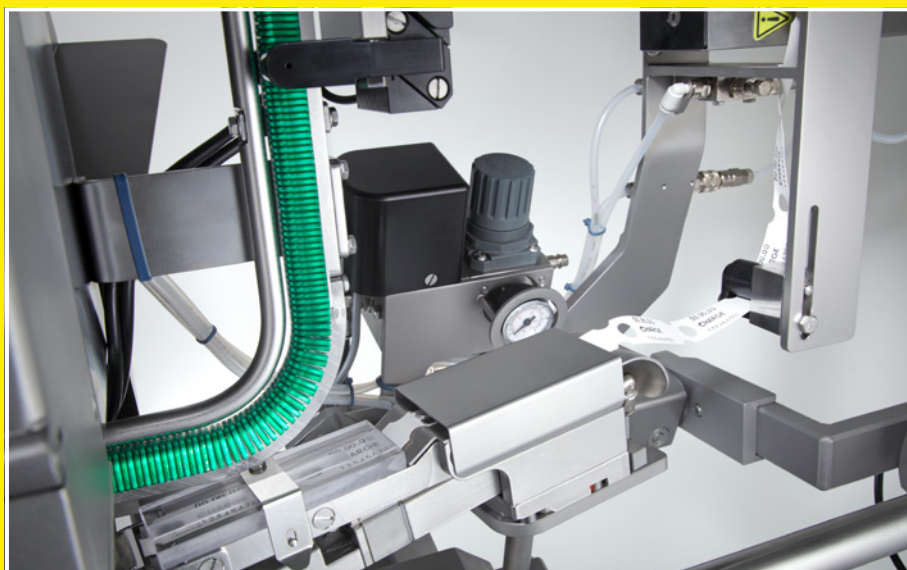
+ Optional equipment

- Set of text types
- Set of numeric characters
- Set of dates
- Additional printing plate

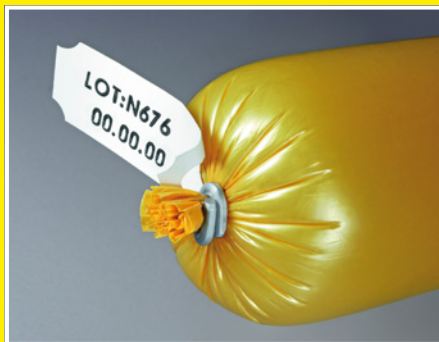
Function and operation

The ES 4000 labelling system is mounted directly to the PDC or PDC-A. The labels are transported to the hot stamping printer, printed and routed to the separa-

tors via a guide rail. The label is clipped during clipping.



Tamper-proof product marking during production



Simple and safe: Marking by printed labels

